



# Americans with Disabilities Act Transition Plan

City of Auburn, Indiana

Original: December 2012  
Amendment 7: October 2025

# Preface

This plan is a living document that shall be updated and modified to reflect the most current status of ADA compliance efforts by the City of Auburn. Those involved in creating the original document adopted in 2012 include the following parties:

## Common Council

Kevin Webb	District 1
David Painter	District 2
Marilyn Gearhart	District 3
Dick Stahly	District 4
Michael Walter	District 5
Jim Finchum	At-Large
Denny Ketzenberger	At-Large

## Street Superintendent / ADA Coordinator

William (Bill) L. Brandon  
PO Box 506  
101 Ensley Avenue  
Auburn, IN 46706  
260.925.6455 ext. 2101

Consultant - *Assisted with original inventory and plan development*

  
**A&Z ENGINEERING**  
9017 Coldwater Road, Suite 500  
Fort Wayne, IN 46825  
260.485.7077  
[www.az-engineering.net](http://www.az-engineering.net)

  
**MARTIN RILEY**  
architects • engineers  
221 West Baker Street  
Fort Wayne, IN 46802  
260.422.7994  
[www.martin-riley.com](http://www.martin-riley.com)

## Table of Contents

Preface .....	2
Section 1: Mission Statement .....	1
Section 2: Non-Discrimination Notice.....	1
Section 3: Designation of ADA Coordinator.....	2
Section 4: Grievance Procedure.....	2
Section 5: Public Involvement Opportunities .....	3
Section 6: Public Right-of-Way Facilities.....	3
Section 7: Public Buildings and Facilities.....	7
Section 8: Funding & Scheduling .....	8
Section 9: Review & Evaluation .....	8

### *Appendix A: ADA Adoption Ordinances / Resolutions*

### *Appendix B: ADA Grievance Form*

### *Appendix C: ADA Region Inventory Maps & Inventory Database for Public Right-of-Way Facilities*

### *Appendix D: Buildings and Facilities Assessments*

### *Appendix E: Revisions/Amendment*

## Section 1: Mission Statement

In 1990, the Federal Government enacted the Americans with Disabilities Act ("ADA"). The City of Auburn, Indiana recognizes its legal obligation to comply with Title II of the ADA and hereby establishes a transition plan to ensure compliance of this federal law, rules and regulations. Therefore Auburn will identify barriers that exist and state how and when the barriers are to be removed by providing a means to address complaints of discrimination, by encouraging public input to assess, address and meet access needs, and by establishing periodic reviews of the plan to monitor progress and compliance. The purpose of the Plan is to ensure that the citizens of Auburn are provided full access to City programs, services, and activities in a safe and timely manner. The City elected officials and staff believe the ability to accommodate disabled persons is essential to good customer service, the quality of life of Auburn residents and effective governance. Title II of the ADA requires that each of the City of Auburn services, programs and activities, when viewed in their entirety, be readily accessible and usable by individuals with disabilities.

## Section 2: Non-Discrimination Notice

In accordance with the requirements of Title II of the Americans with Disabilities Act of 1990 ("ADA"), the City of Auburn will not discriminate against qualified individuals with disabilities on the basis of disability in its services, programs, or activities.

**Employment:** Auburn does not discriminate on the basis of disability in its hiring or employment practices and complies with all regulations promulgated by the U.S. Equal Employment Opportunity Commission under Title I of the ADA.

**Effective Communication:** The City of Auburn will generally, upon request, provide appropriate aids and services leading to effective communication for qualified persons with disabilities so they can participate equally in City programs, facilities, services, and activities, including qualified sign language interpreters, documents in Braille, and other ways of making information and communications accessible to people who have speech, hearing, or vision impairments.

**Modifications to Policies and Procedures:** Auburn will make all reasonable modifications to policies and programs to ensure that people with disabilities have an equal opportunity to enjoy all of its programs, facilities, services, and activities. For example, individuals with service animals are welcome in City offices, even where pets are generally prohibited.

Anyone who requires an auxiliary aid or service for effective communication, or a modification of policies or procedures to participate in a program, service, or activity of Auburn should

contact the ADA Coordinator, William (Bill) L. Brandon, as soon as possible but no later than 48 hours before the scheduled event.

The ADA does not require the City to take any action that would fundamentally alter the nature of its programs or services or impose an undue financial or administrative burden.

Complaints that a program, service, or activity of the City is not accessible to persons with disabilities should be directed to the ADA Coordinator, William (Bill) L. Brandon.

The City of Auburn will not place a surcharge on a particular individual with a disability or any group of individuals with disabilities to cover the cost of providing auxiliary aids/services or reasonable modifications of policy, such as retrieving items from locations that are open to the public but are not accessible to persons who use wheelchairs.

### **Section 3: Designation of ADA Coordinator**

Pursuant to Ordinance No. 2012-12 adopted on the 4<sup>th</sup> day of September, 2012, by the City of Auburn, the position of ADA Coordinator for the City was created. The following individual was appointed to serve in such capacity:

<b><i>ADA Coordinator</i></b>	<b><i>ADA Coordinator's Name &amp; Title</i></b>	<b><i>Coordinator's Phone Number</i></b>
City ADA Coordinator	Troy F. Ackerman, Street Superintendent	(260) 925-6455

Troy F. Ackerman holds such position concurrently with his appointment as the Street Superintendent and is responsible for overseeing compliance with the ADA. See **Appendix A** for adopted ordinance.

### **Section 4: Grievance Procedure**

The grievance procedure in place for the City of Auburn with regards to ADA complaints and resolutions is provided in **Appendix B**. Also included is a sample grievance form that may be used to document a complaint regarding a sidewalk, ramp, building access, or other violation and record the steps taken to address the complaint.

## Section 5: Public Involvement Opportunities

The general public is encouraged to participate in identifying needs or barriers to accessibility. This may be done by contacting the ADA Coordinator.

**Troy F. Ackerman  
ADA Coordinator  
PO Box 506  
101 Ensley Avenue  
Auburn, IN 46706**

The Transition Plan shall be available in the City Hall for viewing. Anyone that would like to comment on the Transition Plan can submit their comments in these offices or can contact the ADA Coordinator, Troy F. Ackerman.

After the Auburn Transition Plan has been adopted it will be available in the City Hall. Opportunity of the public to learn and comment on how Auburn, Indiana is working to meet the federal American's with Disabilities Act requirements is provided during any City meeting. Every two years, the City will also include ADA as an official agenda item for our City meeting, to ensure the public and our officials may be updated and learn more about our progress at making our community easy to access. The State and/or federal officials responsible for ADA may also be invited so that we may learn how they are also taking steps to meet these requirements in our City.

## Section 6: Public Right-of-Way Facilities

***Sidewalks & Curb Ramps:*** Sidewalks and curb ramps constructed as part of a planned development, replaced by or for the City, or replaced by or for a property owner through a City match funding program, shall be constructed in accordance with the PROWAG (Proposed Accessibility Guidelines for Pedestrian Facilities in the Public Right-of-Way) regulations and standards as well as the Indiana Department of Transportation design standards and specifications. Current links at the time of publication of this document to each of the aforementioned sources are provided below:

PROWAG: <http://www.access-board.gov/ada>

INDOT: <http://www.in.gov/dot/div/contracts/standards/drawings/sep21/sep.htm>

In an effort to remove barriers to streets and sidewalks, the City has inventoried all curb ramps and sidewalks within the City's jurisdiction. The inventory procedure is intended to identify a comprehensive list or inventory of all curb ramps and sidewalks in the City jurisdiction that are not ADA compliant. This is composed of an effort to both fully inventory the entire infrastructure that is present and then to identify those items in the system which are not compliant with ADA requirements. **Facilities located along State Highways within City limits**

**shall be under the authority of the State. However, facilities are included in this Transition Plan inventory for completeness.**

The City has developed its inventory of the existing system in three steps:

#### Step 1: Aerial Maps

Aerial maps of the City were used to map locations on system that include sidewalks and/or curb ramps. A preliminary review and evaluation of facilities were done via desk map review and site walk/drive through to identify facilities which are apparent to be deemed non-complaint. Facilities which appeared to be potentially compliant were evaluated further as outlined in Step 2.

#### Step 2: Field Evaluation and Inventory

Once the system of sidewalks and curb ramps had been mapped and identified, a field investigation of each was completed to confirm preliminary review findings. Those facilities that were potentially compliant were measured and/or evaluated for the following characteristics:

- Measured width
- Cross slope observation (2% maximum)
- Vertical deflection (heaving, joint condition, etc.)
- Ramp width
- Ramp slope
- Ramp turning space
- Ramp clear space
- Detectable warnings

Ramp data collection sheets were used to evaluate and record field conditions of those curb ramps that appeared to be compliant. Refer to **Appendix C** for data collection sheet template.

The above items were considered and a “Quality Ranking” was given to each route:

- *A – Good Condition* – little to no ADA deficiencies. Generally traversable by disabled individuals with little difficulty. The improvement of these facilities would be a low priority for the City.
- *B – Fair Condition* – few minor ADA deficiencies. Traversable by disabled individuals but require increased effort to overcome existing barriers. The improvement of these facilities would be of medium priority dependent on location to public facilities and/or disabled individuals.
- *C – Poor Condition* –several major ADA deficiencies. Disabled individuals would not be able to traverse such facilities or would have extreme difficulty due to existing barriers.

The improvement of these facilities would be a high priority as disabled individuals would typically not be able to use such facilities.

### Step 3: Preparation of a Map of Compliant and Non-Compliant features

Maps have been produced identifying all non-compliant sidewalks and ramps with their corresponding condition and priority ratings. Streets are inventoried as a whole with both sides of the street included in the total linear foot of walk. Curb ramps are inventoried as part of the street which it crosses. For example, at an intersection with two curb ramps per corner, Street X would have four ramps included in its inventory with Street Y containing the remaining four curb ramps. In the case of bi-directional ramps, the ramps will be included in the east-west street inventory.

The inventory is broken down into four quadrants (northeast, northwest, southeast, and southwest) based upon the intersection of SR 8 east & west and Cedar Creek north & south. Maps are provided in **Appendix C** that graphically illustrates the infrastructure inventory.

Overall, there are several locations of concern in regard to ADA compliance. Some common deficiencies include location of push button pedestrian crossing at signalized intersections and lack of ADA compliant ramps in neighborhoods. Other deficiencies observed in the field include sidewalk width, lack of detectable warning plates, vertical differentials among sidewalk panels, discontinuities, obstructions, and steep cross slope. See table below for a more comprehensive list of the types of deficiencies commonly found to exist.

**Table 1: Common ADA Deficiencies**

ISSUE	POSSIBLE BARRIERS
Sidewalk and Pathway Clear Width	Narrow, Below Guidelines
Sidewalk and Pathway CrossSlope	Steepness, Irregularity, Variability, Warping
Landings Along Sidewalks and Pathways	Less Than 4 feet by 4 feet
Sidewalk and Pathway Grade	Steepness, Angle Points
Materials and Finishes	Deterioration of Surfaces, Deterioration of Markings, Appropriateness of material (ex. Cobblestones)
Gratings	Grating Type, Grate Opening Orientation
Discontinuities	Missing Sections, Gaps, Drops, Steps
Detectable Warning System	Missing, Inappropriate Materials, Inadequate Size, Wrong Location



ISSUE	POSSIBLE BARRIERS
Obstructions	Signs, Mail Boxes, Fire Hydrants, Benches, Telephones, Traffic Signal Poles, Traffic Signal Controller Boxes, Newspaper Boxes, Drainage Structures, Tree Grates, Pole Mounted Objects, Standing Water, Snow or Ice
Traffic Signal Systems	Lack of Provision for the Visually Impaired such as APS, Inadequate Time Allowed, Inoperable Buttons, Inaccessible Buttons
Curb Ramp	Missing, Doesn't Fall within Marked Crosswalk, Doesn't Conform to Guidelines
Curb Ramp Flares	Missing Where Required, Too Steep

***Pedestrian Signalized Crossings:*** PROWAG contains guidelines for ADA accessibility at pedestrian signalized crossings. Most of the signalized crossings within the City are along State Routes and are the responsibility of the State. The City does have 2 signalized intersections which include pedestrian crossings which need to meet PROWAG requirements.

The locations of the intersections which need to be upgraded to meet PROWAG are:

- 15<sup>th</sup> Street and Grandstaff Drive
- 9<sup>th</sup> Street and Main Street



The City shall maintain Sidewalk & Curb Ramp Inventory based on Chapter 95.13 of the City Code of Ordinances.

## Section 7: Public Buildings and Facilities

***Buildings & Public Facilities:*** ADA accessible interiors of City owned buildings and facilities were reviewed based on the 2010 ADA Standards for Accessible Design, by the Department of Justice, dated September 15, 2010. We reviewed only the areas open to the public. The document is a civil law, not the building code. The building code does not provide many of the exceptions, which may result in requesting a variance and/or having to fully comply with the requirements set forth in the building code. The building code and the 2010 ADA Standards for Accessible Design by the Department of Justice are very similar however, there are differences, approximately 10% different.

The 2010 ADA Standards for Accessible Design, by the Department of Justice, sets minimum requirements, both scoping and technical, for newly designed and constructed or altered State and local government facilities, public accommodations, and commercial facilities to be readily accessible to and usable by individuals with disabilities.

For information about the ADA, including the revised 2010 ADA regulations, please visit the Department's website, or, for answers to specific questions, call the toll-free ADA information Line at 800.514.0301.

The assessment is primarily for the publicly accessible portion of the buildings. The publicly accessible portions would include public meeting rooms (council chambers), navigation from parking lot to front door, public restrooms, service counters, etc. The building inspection did not include private offices, street department garages, employee areas of fire stations, etc. There would also be no reason for assessing areas on 2nd floors if there is no ADA access to the 2nd floor such as an elevator.

An ADA evaluation was completed on the following public facilities using the guidelines referenced above:

### City Operations Facilities

- City Hall
- Fire Station No. 1
- Fire Station No. 2
- Water Department Building
- Street Department Building
- Electric Department Building
- Parks Department Building
- Water Pollution Control Building No. 1
- Water Pollution Control Building No. 2
- Police Shooting Range

#### City Owned Parks & Rec Facilities open to Public

- Rieke Park
- Rieke Park Lodge
- Eckhart Park (Restroom & Pavilion)
- Smith Acres Park (Restroom)
- Thomas Park Restroom
- Memorial Park Restroom

## Section 8: Funding & Scheduling

The City of Auburn has been actively addressing the issue of ADA compliance for the last 25 years making sure new construction adheres to the current ADA guidelines. However, with guidelines changing and becoming more defined, the City of Auburn still has non-compliant facilities to address. They will be challenged to allot adequate funding to repair, modify, or reconstruct the sidewalks, ramps, and buildings. Continuing on their current ADA program, the City will continue to allot approximately \$75,000 annually to repair, modify or reconstruct sidewalk and ramps to meet current ADA standards. The most cost-effective means of making the improvements will be in conjunction with other capital improvement public works projects such as road improvements or utility projects. These efforts, in conjunction with external grant programs such as Safe Routes to School, CEDIT, Cumulative Capital Improvement, Cumulative Capital Development, Local Roads and Streets, and any federal MAP21 funding programs shall be used to continually address ADA concerns. It is proposed to implement a 5-10 year plan to start addressing non-ADA compliant facilities which are of the highest priority and serve to access government facilities and other important public destinations. However, this plan remains flexible as to allow facilities with lower ratings in other locations to be brought into compliance as priorities are reassessed and modified. The purpose for this flexibility is to allow the plan to adapt to the current needs of the community.

Estimated costs for walks and ramps used are based on typical unit prices for sidewalk and curb ramps based on federally funded projects. Bid histories as well as INDOT standard bid tabs were consulted to derive budgetary unit costs for both linear sidewalk and curb ramps. **Appendix C** contains a figure defining each region as well as an inventory database of the identified deficiencies and estimated costs. This database presents the worst-case scenario assuming that all segments are in need of being fully replaced. There may be segments that have salvageable sections or deficiencies that are minor in nature which would decrease the estimated cost of improvement. Estimated costs for building improvements will be assessed upon completion of the building evaluation and inventory. **Appendix D** of this report shall contain all information regarding the building inventory and results.

## Section 9: Review & Evaluation

Every two years the City Council shall meet with the ADA Coordinator, Troy F. Ackerman, to review the City's efforts put forth the previous **two years** to comply with the ADA and the

implementation of the Transition Plan. At this time an update to the Transition Plan is recommended. This shall include any adjustment to the number of sidewalks and ramps that are non-compliant, any changes to funding sources and changes to the schedule, if needed. The City Council and ADA Coordinator, Troy F. Ackerman, shall review the prioritization of repairs, modifications, or replacement of sidewalks and curb ramps for the upcoming year. At this time, they will also determine the number of sidewalks and curbs that can be brought into compliance with ADA standards (if different than previously stated in Transition Plan).

## **Appendix A: ADA Adoption Ordinances**

1<sup>ST</sup> READING 12.18.2012  
2<sup>ND</sup> READING 01.02.2013

Received 12.10.2012  
Clerk-Treasurer email  
Auburn, IN

**ORDINANCE NO. 2012-24**

**AN ORDINANCE ESTABLISHING A  
TRANSITION PLAN AND PROCEDURE  
UNDER THE AMERICANS WITH DISABILITIES ACT**

**SUMMARY**

This ordinance establishes a Transition Plan and Procedure under the Americans with Disabilities Act of 1990 (ADA).

_____ Recorder's Office	_____ x _____ Publish Public Hearing
_____ Auditor's Office	<u>01.02.2013 @ 6:00pm</u>
_____ Clerk's Office	_____ x _____ Publish O/R after adoption
_____ Other:	_____
_____	
_____	
_____	

**ORDINANCE NO. 2012-24**

**AN ORDINANCE ESTABLISHING A  
TRANSITION PLAN AND PROCEDURE  
UNDER THE AMERICANS WITH DISABILITIES ACT**

**WHEREAS**, in 1990, the Federal Government enacted the Americans with Disabilities Act ("ADA"). The City of Auburn, Indiana, recognizes its legal obligation to comply with Title II of the ADA and hereby maintains a transition plan and procedure to ensure compliance of this federal law, rules, and regulations; and

**WHEREAS**, the City of Auburn will identify barriers that exist and state how and when the barriers are to be removed by providing a means to address complaints of discrimination, by encouraging public input to assess, address and meet access needs, and by establishing periodic reviews of the plan to monitor progress and compliance; and

**WHEREAS**, the purpose of the Plan is to ensure that the citizens of Auburn are provided full access to City programs, services, and activities in a safe and timely manner; and

**WHEREAS**, the City elected officials and staff believe the ability to accommodate disabled persons is essential to good customer service, the quality of life of Auburn residents, and effective governance; and

**WHEREAS**, Title II of the ADA requires that each of the City of Auburn services, programs, and activities, when viewed in their entirety, be readily accessible and usable by individuals with disabilities; Now Therefore,

**BE IT ORDAINED BY THE COMMON COUNCIL OF THE CITY OF  
AUBURN, INDIANA:**

**Section 1.**

In accordance with the requirements of Title II of the Americans with Disabilities Act of 1990 ("ADA"), the City of Auburn will not discriminate against qualified individuals with disabilities on the basis of disability in its services, programs, or activities.

**Employment:** Auburn does not discriminate on the basis of disability in its hiring or employment practices and complies with all regulations promulgated by the U.S. Equal Employment Opportunity Commission under Title I of the ADA.

**Effective Communication:** The City of Auburn will generally, upon request, provide appropriate aids and services leading to effective communication for qualified persons with disabilities so they can participate equally in City programs, facilities, services, and activities, including qualified sign language interpreters, documents in Braille, and other ways of making information and communications accessible to people who have speech, hearing, or vision impairments.

**Modifications to Policies and Procedures:** Auburn will make all reasonable modifications to policies and programs to ensure that people with disabilities have an equal opportunity to enjoy all of its programs, facilities, services, and activities. For example, individuals with service animals are welcome in City offices, even where pets are generally prohibited.

Anyone who requires an auxiliary aid or service for effective communication, or a modification of policies or procedures to participate in a program, service, or activity of



Auburn should contact the ADA Coordinator as soon as possible but no later than 48 hours before the scheduled event.

The ADA does not require the City to take any action that would fundamentally alter the nature of its programs or services, or impose an undue financial or administrative burden. Complaints that a program, service, or activity of the City is not accessible to persons with disabilities should be directed to the ADA Coordinator.

The City of Auburn will not place a surcharge on a particular individual with a disability or any group of individuals with disabilities to cover the cost of providing auxiliary aids/services or reasonable modifications of policy, such as retrieving items from locations that are open to the public but are not accessible to persons who use wheelchairs.

## **Section 2.**

The general public is encouraged to participate in identifying needs or barriers to accessibility. This may be done by contacting the ADA Coordinator.

ADA Coordinator  
PO Box 506  
101 Ensley Avenue  
Auburn, IN 46706

The Transition Plan shall be available in the City Hall for viewing. Anyone that would like to comment on the Transition Plan can submit their comments to the Office of the Clerk-Treasurer or contact the ADA Coordinator.

Opportunity of the public to learn and comment on how Auburn, Indiana is working to meet the Federal Americans with Disabilities Act requirements may be provided during any City meeting. Every two years, the City will also include ADA as an official agenda

item for a City Council meeting, to ensure the public and City officials may be updated, and learn more about City progress at making the community accessible under the Americans with Disabilities Act.

**Section 3.**

The City of Auburn Americans with Disabilities Act Transition Plan shall be maintained by the City of Auburn, Indiana and be available for public inspection. Copies of the Plan shall be available at the Office of the Clerk-Treasurer, the Office of the ADA Coordinator, and the Office of the City Engineer. In addition, said plan shall be made available on the City of Auburn web-based internet site and any other electronic location available to the general public.

**Section 4.**

**BE IT FURTHER ORDAINED** that this Ordinance shall be in full force and effect from and after its passage and approval by the Mayor and the Common Council of the City of Auburn, Indiana, and appropriate publication with a statutorily accepted newspaper with circulation in DeKalb County, Indiana. The Ordinance shall be codified under a new Chapter 100, in the Auburn City Code. The original ordinance shall be maintained by the Office of the Clerk-Treasurer and the codified version shall be placed on the City of Auburn's Web-Based Code. See Exhibit "A" attached hereto and made a part hereof.

1<sup>ST</sup> READING 12.18.2012  
2<sup>ND</sup> READING 01.02.2013

**PASSED AND ADOPTED** by the Common Council of the City of Auburn, Indiana, this

2 day of January, 2013.



**JAMES FINCHUM,**  
Council Member

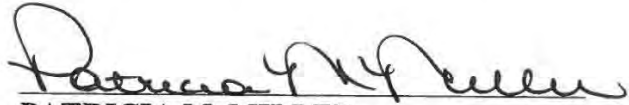
ATTEST:



**Patricia M. Miller**  
Clerk-Treasurer

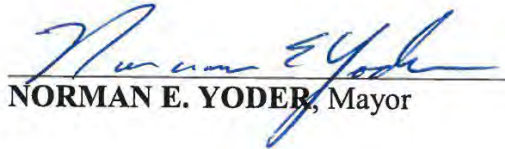
Presented by me to the Mayor of the City of Auburn, Indiana, this 2 day of

January, 2013



**PATRICIA M. MILLER**  
Clerk-Treasurer

**APPROVED AND SIGNED** by me this 2 day of January, 2013.



**NORMAN E. YODER,** Mayor

**VOTING:**

**AYE**

**NAY**

Dick Stahly

*Rick (Dick) Stahly*

David Painter

*David Painter*

Marilyn Gearhart

*Marilyn Gearhart*

James Finchum

*James Finchum*

Dennny Ketzenberger

*Dennny Ketzenberger*

Kevin Webb

*Kevin A. Webb*

Michael Walter

*Michael Walter*

Exhibit "A"

**TRANSITION PLAN AND PROCEDURE UNDER THE AMERICANS WITH  
DISABILITIES ACT**

100.001 City ADA Policy

100.002 ADA Coordinator

100.003 Maintenance of the Americans with Disabilities Transition Plan

**100.001 City ADA Policy**

In accordance with the requirements of Title II of the Americans with Disabilities Act of 1990 ("ADA"), the City of Auburn will not discriminate against qualified individuals with disabilities on the basis of disability in its services, programs, or activities.

Employment: Auburn does not discriminate on the basis of disability in its hiring or employment practices and complies with all regulations promulgated by the U.S. Equal Employment Opportunity Commission under Title I of the ADA.

Effective Communication: The City of Auburn will generally, upon request, provide appropriate aids and services leading to effective communication for qualified persons with disabilities so they can participate equally in City programs, facilities, services, and activities, including qualified sign language interpreters, documents in Braille, and other ways of making information and communications accessible to people who have speech, hearing, or vision impairments.

Modifications to Policies and Procedures: Auburn will make all reasonable modifications to policies and programs to ensure that people with disabilities have an equal opportunity to enjoy all of its programs, facilities, services, and activities. For

example, individuals with service animals are welcome in City offices, even where pets are generally prohibited.

Anyone who requires an auxiliary aid or service for effective communication, or a modification of policies or procedures to participate in a program, service, or activity of Auburn should contact the ADA Coordinator as soon as possible but no later than 48 hours before the scheduled event.

The ADA does not require the City to take any action that would fundamentally alter the nature of its programs or services, or impose an undue financial or administrative burden. Complaints that a program, service, or activity of the City is not accessible to persons with disabilities should be directed to the ADA Coordinator.

The City of Auburn will not place a surcharge on a particular individual with a disability or any group of individuals with disabilities to cover the cost of providing auxiliary aids/services or reasonable modifications of policy, such as retrieving items from locations that are open to the public but are not accessible to persons who use wheelchairs.

#### **100.002 ADA COORDINATOR**

The general public is encouraged to participate in identifying needs or barriers to accessibility. This may be done by contacting the ADA Coordinator.

ADA Coordinator  
PO Box 506  
101 Ensley Avenue  
Auburn, IN 46706

The Transition Plan shall be available in the City Hall for viewing. Anyone that would like to comment on the Transition Plan can submit their comments to the Office of the Clerk-Treasurer or contact the ADA Coordinator.

Opportunity of the public to learn and comment on how Auburn, Indiana is working to meet the Federal Americans with Disabilities Act requirements may be provided during any City meeting. Every two years, the City will also include ADA as an official agenda item for a City Council meeting, to ensure the public and City officials may be updated, and learn more about City progress at making the community accessible under the Americans with Disabilities Act.

**100.003 Maintenance of the Americans with Disabilities Transition Plan**

The City of Auburn Americans with Disabilities Act Transition Plan shall be maintained by the City of Auburn, Indiana and be available for public inspection. Copies of the Plan shall be available at the Office of the Clerk-Treasurer, the Office of the ADA Coordinator, and the Office of the City Engineer. In addition, said plan shall be made available on the City of Auburn web-based internet site and any other electronic location available to the general public.

**ORDINANCE NO. 2012-12**

**AN ORDINANCE ESTABLISHING A  
GRIEVANCE PROCEDURE UNDER  
THE AMERICANS WITH DISABILITIES ACT**

*WHEREAS, it is the intent of the City of Auburn, Indiana to expediently and equitably resolve issues concerning barriers to persons with disability or alleged discrimination towards persons with disability, in employment practice or in the provision of infrastructure or services provided by the City of Auburn; AND*

*WHEREAS, equitable resolution is strived for through the review process,*

**BE IT ORDAINED BY THE COMMON COUNCIL OF THE CITY OF AUBURN,  
INDIANA:**

This Grievance Procedure is established to meet the requirements of the Americans with Disabilities Act of 1990 ("ADA"). It may be used by anyone who wishes to file a complaint alleging discrimination on the basis of disability in the provisions of infrastructure, services, activities, programs, or benefits by the City of Auburn, Indiana (the "City"). NOTE: The City's Personnel Policy in the EMPLOYEE HANDBOOK governs employment-related complaints of disability discrimination.

**Section 1.**

There is hereby established an ADA Coordinator and an ADA Coordination Committee comprised of three persons. The Coordinator and the committee members may be Auburn City Department Heads or employees. The Mayor shall appoint the ADA Coordinator and each ADA Coordination Committee member. The Coordinator and the Committee members shall serve at the pleasure of the Mayor and shall receive no compensation for their service.



## **Section 2.**

The initial questions, requests for information, requests for accommodations, concerns, and/or complaints regarding barriers, access, or discrimination in regards to meetings, events, activities, and access to the provision of services or infrastructure provided by the City of Auburn to persons with disabilities should be direct to the City of Auburn ADA Coordinator, PO Box 506, Auburn, IN 46706. The initial contact with the ADA Coordinator may be written or verbal. The ADA Coordinator will provide the requested information, make arrangements for requested accommodation, and respond to the issue or complaint that was the reason for the initial contact by the complainant.

## **Section 3.**

If the response by the ADA Coordinator or his/her designee does not satisfactorily resolve the issue, the complainant and/or his/her designee may file a written complaint on the City of Auburn, Indiana ADA Grievance Form available in the City of Auburn's Clerk/Treasurer's Office located in City Hall at 210 East Ninth Street, Auburn, IN 46706 or at the City of Auburn's Street Department office located at 101 Ensley Avenue, Auburn, IN 46706. The written complaint should be filed with the ADA Coordinator as soon as possible but no later than sixty (60) calendar days after the alleged ADA violation. Alternate means of filing the complaint, such as person interviews or a tape recording of the complaint, will be made available for persons with disabilities upon request.

## **Section 4.**

Within fifteen (15) days after receipt of the written complaint, the ADA Coordinator and the ADA Coordination Committee will meet with the complainant to discuss the complaint and possible solutions. Within fifteen (15) calendar days of the meeting, the ADA Coordinator or

his/her designee will respond on behalf of the Committee in writing, and where appropriate, in a format accessible to the complainant, such as large print, Braille, or audio tape. The response will explain the position of the ADA Coordination Committee on behalf of the City and offer substantive resolution of the complaint.

#### **Section 5.**

If the response of the ADA Coordination Committee still does not resolve the complaint, the complainant and/or his/her designee may appeal the Committee decision to the Auburn Board of Public Works and Safety within thirty (30) calendar days after receipt of the ADA Coordination Committee's response. Within thirty-one (31) days after receipt of the appeal, the Board of Public Works and Safety will meet with the complainant to discuss the complaint and possible resolutions. Within fifteen (15) days after the meeting, the Board of Public Works and Safety will respond in writing, and, where appropriate, in a format accessible to the complainant, with a final resolution of the complaint.

#### **Section 6.**

All written complaints received by the ADA Coordinator, the ADA Coordination Committee, and appeals to the Board of Public Works and Safety and the responses from these persons or groups will be retained by the City of Auburn for at least three (3) years.

#### **Section 7.**

**BE IT FURTHER ORDAINED** that this Ordinance shall be in full force and effect from and after its passage and approval by the Mayor and the Common Council of the City of Auburn, Indiana, and appropriate publication with a statutorily accepted newspaper with circulation in DeKalb County, Indiana. The Ordinance shall be codified under a new Chapter 99, in the Auburn City Code. The original ordinance shall be maintained by the Office of the Clerk-

1<sup>ST</sup> READING 8.21.2012  
2<sup>ND</sup> READING 9.04.2012

Treasurer and the codified version shall be placed on the City of Auburn's Web-Based Code.

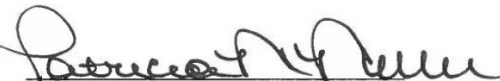
See Exhibit "A" attached hereto and made a part hereof.

**PASSED AND ADOPTED** by the Common Council of the City of Auburn, Indiana, this

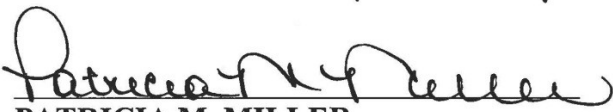
4 day of Sept., 2012.

  
**JAMES FINCHUM,**  
Council Member

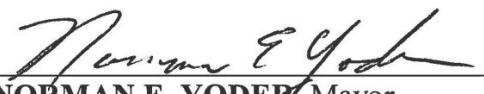
ATTEST:

  
Patricia M. Miller  
Clerk-Treasurer

Presented by me to the Mayor of the City of Auburn, Indiana, this 4 day of Sept, 2012

  
**PATRICIA M. MILLER**  
Clerk-Treasurer

**APPROVED AND SIGNED** by me this 4 day of September, 2012.

  
**NORMAN E. YODER,** Mayor

**VOTING:**

**AYE**

**NAY**

Dick Stahly

*Rick (Dick) Stahly*

David Painter

*David Painter*

Marilyn Gearhart

*Marilyn Gearhart*

James Finchum

*James Finch*

Dennny Ketzenberger

*Dennny Ketzenberger*

Keith Schrimshaw

*Keith Schrimshaw*

Michael Walter

*Michael Walter*

Exhibit "A"

**AMERICAN WITH DISABILITIES ACT (ADA) GRIEVANCE PROCEDURE**

- 99.01 ADA Coordinator
- 99.02 Requests for Information
- 99.03 ADA Grievance Forms
- 99.04 Grievance Resolution
- 99.05 Grievance Appeal
- 99.06 Record Retention

**99.01 ADA Coordinator**

There is hereby established an ADA Coordinator and an ADA Coordination Committee comprised of three persons. The Coordinator and the committee members may be Auburn City Department Heads or employees. The Mayor shall appoint the ADA Coordinator and each ADA Coordination Committee member. The Coordinator and the Committee members shall serve at the pleasure of the Mayor and shall receive no compensation for their service.

**99.02 Requests for Information**

The initial questions, requests for information, requests for accommodations, concerns, and/or complaints regarding barriers, access, or discrimination in regards to meetings, events, activities, and access to the provision of services or infrastructure provided by the City of Auburn to persons with disabilities should be direct to the City of Auburn ADA Coordinator, PO Box 506, Auburn, IN 46706. The initial contact with the ADA Coordinator may be written or verbal. The ADA Coordinator will provide the requested information, make arrangement for requested accommodation, and respond to the issue or complaint that was the reason for the initial contact by the complainant.

### **99.03 ADA Grievance Forms**

If the response by the ADA Coordinator or his/her designee does not satisfactorily resolve the issue, the complainant and/or his/her designee may file a written complaint on the City of Auburn, Indiana ADA Grievance Form available in the City of Auburn's Clerk/Treasurer's Office located in City Hall at 210 East Ninth Street, Auburn, IN 46706 or at the City of Auburn's Street Department office located at 101 Ensley Avenue, Auburn, IN 46706. The written complaint should be filed with the ADA Coordinator as soon as possible but no later than sixty (60) calendar days after the alleged ADA violation. Alternate means of filing the complaint, such as person interviews or a tape recording of the complaint, will be made available for persons with disabilities upon request.

### **99.04 Grievance Resolution**

Within fifteen (15) days after receipt of the written complaint, the ADA Coordinator and the ADA Coordination Committee will meet with the complainant to discuss the complaint and possible solutions. Within fifteen (15) calendar days of the meeting, the ADA Coordinator or his/her designee will respond on behalf of the Committee in writing, and where appropriate, in a format accessible to the complainant, such as large print, Braille, or audio tape. The response will explain the position of the ADA Coordination Committee on behalf of the City and offer substantive resolution of the complaint.

### **99.05 Grievance Appeal**

If the response of the ADA Coordination Committee still does not resolve the complaint, the complainant and/or his/her designee may appeal the Committee decision to the Auburn Board of Public Works and Safety within thirty (30) calendar days after receipt of the ADA Coordination Committee's response. Within thirty-one (31) days after receipt of the appeal,

the Board of Public Works and Safety will meet with the complainant to discuss the complaint and possible resolutions. Within fifteen (15) days after the meeting, the Board of Public Works and Safety will respond in writing, and, where appropriate, in a format accessible to the complainant, with a final resolution of the complaint.

**99.06 Record Retention**

All written complaints received by the ADA Coordinator, the ADA Coordination Committee, and appeals to the Board of Public Works and Safety and the responses from these persons or groups will be retained by the City of Auburn for at least three (3) years.

## **Appendix B: ADA Grievance Form**





## CITY OF AUBURN, INDIANA ADA GRIEVANCE FORM

Name of Complainant: \_\_\_\_\_

Home Mailing Address: \_\_\_\_\_

City: \_\_\_\_\_ State: \_\_\_\_\_ Zip: \_\_\_\_\_

Home Telephone: \_\_\_\_\_

Work Telephone: \_\_\_\_\_

Mobile/Cell: \_\_\_\_\_

Email Address: \_\_\_\_\_

Date of Incident or Problem: \_\_\_\_\_

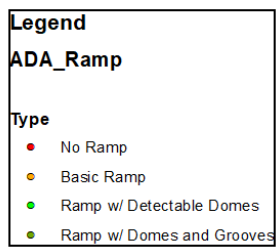
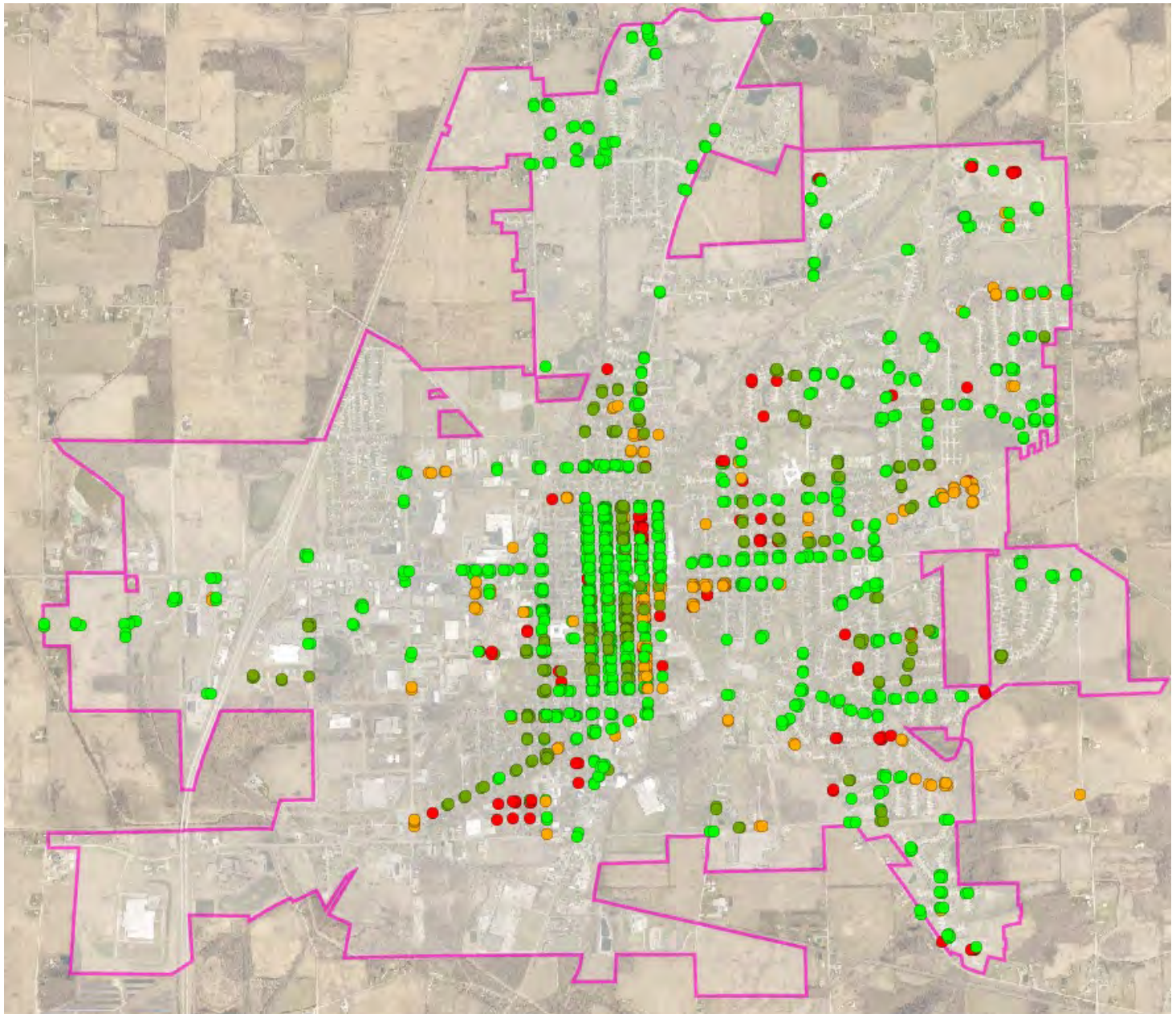
Description of Incident or Problem:


Please attach additional pages if needed.

This Grievance Form should be submitted by the grievant and/or his/her designee as soon as possible but no later than sixty (60) calendar days after the date of the alleged violation to the City of Auburn ADA Coordinator.

Troy F. Ackerman, Street Superintendent and ADA Coordinator  
City of Auburn, Indiana  
PO Box 506  
101 E Ensley Avenue  
Auburn, IN. 46706  
Telephone: 260.925.6455 ext. 2101  
Fax: 260.920.3351  
Email: Street@ci.auburn.in.us

## **Appendix C: ADA Inventory Map for Public Right of Way Facilities - 2024**



# City of Auburn ADA Curb Ramp Transition Plan

Year	Intersection	Intersection Quadrant	Issue	Project	Estimated Cost
2025	15th St and Baxter St	NorthEast	non compliance	Baxter St. Recon	\$3,000
2025	15th St and Baxter St	NorthWest	non compliance	Baxter St. Recon	\$3,000
2025	15th St and Baxter St	SouthWest	non compliance	Baxter St. Recon	\$3,000
2025	15th St and Center St	SouthEast	non compliance	Baxter St. Recon	\$3,000
2025	9th St and Baxter St	SouthWest	non compliance	Baxter St. Recon	\$3,000
2025	9th St and Baxter St	SouthEast	non compliance	Baxter St. Recon	\$3,000
2025	9th St and Baxter St	NorthEast	non compliance	Baxter St. Recon	\$3,000
2025	9th St and Baxter St	NorthWest	non compliance	Baxter St. Recon	\$3,000
2025	Ashwood Dr and Duesenberg Dr	SouthWest	non compliance	2025 Paving	\$3,000
2025	Ashwood Dr and Duesenberg Dr	NorthWest	non compliance	2025 Paving	\$3,000
2025	Ashwood Dr and Duesenberg Dr	NorthEast	non compliance	2025 Paving	\$3,000
2025	Ashwood Dr and Duesenberg Dr	SouthEast	non compliance	2025 Paving	\$3,000
2025	Morningstar Rd and Dewey St	SouthEast	non compliance	2025 Paving	\$3,000
2025	Morningstar Rd and Dewey St	SouthWest	non compliance	2025 Paving	\$3,000
2025	Auburn Dr and Center St	NorthWest	non compliance	2025 Paving	\$3,000
2025	Auburn Dr and Center St	NorthEast	non compliance	2025 Paving	\$3,000
2025	Phaeton Way and Dewey St	SouthEast	non compliance	2025 Paving	\$3,000
2025	Phaeton Way and Dewey St	NorthEast	non compliance	2025 Paving	\$3,000
2025	Phaeton Way and Dewey St	NorthWest	non compliance	2025 Paving	\$3,000
2025	Phaeton Way and Dewey St	SouthWest	non compliance	2025 Paving	\$3,000
2025	Phaeton Way and St Andrews Pl	NorthEast	non compliance	2025 Paving	\$3,000
2025	Phaeton Way and St Andrews Pl	NorthWest	non compliance	2025 Paving	\$3,000
2025	Phaeton Way and Eckhart Ave	NorthWest	non compliance	2025 Paving	\$3,000
2025	Phaeton Way and Eckhart Ave	NorthEast	non compliance	2025 Paving	\$3,000
2025	Phaeton Way and Eckhart Ave	SouthEast	non compliance	2025 Paving	\$3,000
2025	Muirfield Ct and Eckhart Ave	NorthEast	non compliance	2025 Paving	\$3,000
2025	Muirfield Ct and Eckhart Ave	SouthEast	non compliance	2025 Paving	\$3,000
2025	Prestwick Way and Dewey St	NorthWest	non compliance	2025 Paving	\$3,000
2025	Phaeton Way and Eckhart Ave	SouthWest	non compliance	2025 Paving	\$3,000
2025	Gates Cove and Main St	NorthWest	non compliance	2025 ADA	\$3,000
2025	Gates Cove and Main St	SouthWest	non compliance	2025 ADA	\$3,000
2025	Matthew Cove and Main St	NorthWest	non compliance	2025 ADA	\$3,000
2025	Matthew Cove and Main St	SouthWest	non compliance	2025 ADA	\$3,000
2025	Wood Hollow Trail and Trail Road	NorthWest	non compliance	2025 ADA	\$3,000
2025	Wood Hollow Trail and Trail Road	NorthEast	non compliance	2025 ADA	\$3,000
2025	Wood Hollow Trail and Trail Road	SouthEast	non compliance	2025 ADA	\$3,000
2025	Wood Hollow Trail and Trail Road	SouthWest	non compliance	2025 ADA	\$3,000
2025	Hidden Creek Dr and Trail Road	SouthWest	non compliance	2025 ADA	\$3,000
2025	Hidden Creek Dr and Trail Road	SouthEast	non compliance	2025 ADA	\$3,000
2025	Morningstar Rd and Virginia Ln	SouthWest	non compliance	2025 ADA	\$3,000
2025	Morningstar Rd and Virginia Ln	SouthEast	non compliance	2025 ADA	\$3,000
2025	Bunker Ct and Virginia Ln	NorthEast	non compliance	2025 ADA	\$3,000
2025	Bunker Ct and Virginia Ln	SouthEast	non compliance	2025 ADA	\$3,000
2025	Bunker Ct and Virginia Ln	SouthWest	non compliance	2025 ADA	\$3,000
2025	Old Brick Rd and Center St	SouthWest	non compliance	2025 ADA	\$3,000
2025	Old Brick Rd and Center St	SouthEast	non compliance	2025 ADA	\$3,000
2025	Elm St and Garwood Dr	NorthEast	non compliance	2025 ADA	\$3,000
2025	Elm St and Garwood Dr	NorthWest	non compliance	2025 ADA	\$3,000

Year	Intersection	Intersection Quadrant	Issue	Project	Estimated Cost
2026	Elm St and Duesenberg Dr	SouthWest	non compliance	2026 ADA	\$3,000
2026	Elm St and Duesenberg Dr	SouthEast	non compliance	2026 ADA	\$3,000
2026	Elm St and Duesenberg Dr	NorthWest	non compliance	2026 ADA	\$3,000
2026	Elm St and Duesenberg Dr	NorthEast	non compliance	2026 ADA	\$3,000
2026	Elm St and Garwood Dr	NorthWest	non compliance	2026 ADA	\$3,000
2026	Elm St and Garwood Dr	NorthEast	non compliance	2026 ADA	\$3,000
2026	8th St and Jackson St	SouthEast	non compliance	2026 ADA	\$3,000
2026	Main St and Madison St	SouthEast	non compliance	2026 ADA	\$3,000
2026	Main St and Madison St	SouthEast	non compliance	2026 ADA	\$3,000
2026	Ashwood Dr and Birch Run	SouthWest	non compliance	2026 ADA	\$3,000
2026	Ashwood Dr and Birch Run	SouthEast	non compliance	2026 ADA	\$3,000
2026	Ashwood Dr and Hickory Hollow	SouthWest	non compliance	2026 ADA	\$3,000
2026	Ashwood Dr and Hickory Hollow	SouthEast	non compliance	2026 ADA	\$3,000
2026	Ashwood Dr and Elm St	SouthEast	non compliance	2026 ADA	\$3,000
2026	Ashwood Dr and Elm St	SouthWest	non compliance	2026 ADA	\$3,000
2026	Ashwood Dr and Elm St	NorthWest	non compliance	2026 ADA	\$3,000
2026	Ashwood Dr and Elm St	NorthEast	non compliance	2026 ADA	\$3,000
2026	Elm St and Autumn Ln	SouthEast	non compliance	2026 ADA	\$3,000
2026	Elm St and Autumn Ln	SouthWest	non compliance	2026 ADA	\$3,000

Year	Intersection	Intersection Quadrant	Issue	Project	Estimated Cost
2027	Cedar St and 10th St	SouthWest	non compliance	Cedar St Recon	\$3,000
2027	Cedar St and 10th St	SouthEast	non compliance	Cedar St Recon	\$3,000
2027	Cedar St and 10th St	NorthEast	non compliance	Cedar St Recon	\$3,000
2027	Cedar St and 11th St	NorthEast	non compliance	Cedar St Recon	\$3,000
2027	Cedar St and 11th St	NorthWest	non compliance	Cedar St Recon	\$3,000
2027	Cedar St and 11th St	SouthWest	non compliance	Cedar St Recon	\$3,000
2027	Cedar St and 11th St	SouthEast	non compliance	Cedar St Recon	\$3,000
2027	Cedar St and 12th St	NorthEast	non compliance	Cedar St Recon	\$3,000
2027	Cedar St and 12th St	NorthWest	non compliance	Cedar St Recon	\$3,000
2027	Cedar St and 12th St	SouthWest	non compliance	Cedar St Recon	\$3,000
2027	Cedar St and 12th St	SouthEast	non compliance	Cedar St Recon	\$3,000
2027	Cedar St and 15th St	SouthWest	non compliance	Cedar St Recon	\$3,000
2027	Cedar St and 15th St	SouthEast	non compliance	Cedar St Recon	\$3,000
2027	Cedar St and 15th St	NorthEast	non compliance	Cedar St Recon	\$3,000
2027	Cedar St and 15th St	NorthWest	non compliance	Cedar St Recon	\$3,000



# Appendix D: Buildings and Facilities Assessments – 2023

See full Facilities report for Details. Below is summary of deficiencies and accomplishments.

	Location	Description	Quantity	Unit	Units Price	Total Estimated Cost	Completed Date
City Hall	Site	Parking lot ADA 12x18 sign on 8' galvanized post	1	ea	\$126.70	\$126.70	
	Site	Detectable warning surface	10	sf	\$35.40	\$354.00	
	Site	Van Accessible Parking Space Modifications, inclu. signage, modifications to sidewalk, striping access aisle, curb ramp and detectable warning surface	2	ls	\$1,250.00	\$2,500.00	
	Approach	Accessible Handrails	24	lf	\$62.50	\$1,500.00	
	Approach	Adjust Door Closers	4	ea	\$47.90	\$191.60	
	RR	Adjust Door Closers	5	ea	\$47.90	\$239.50	
	RR	Grab Bar, Satin Finish. 1-1/2" diameter x 36" long	1	ea	\$58.00	\$58.00	
	RR	Grab Bar, Satin Finish. 1-1/2" diameter x 18" long	6	ea	\$66.50	\$399.00	
	RR	Relocate Grab Bar, Satin Finish. 1-1/2" diameter x 36" long	5	ea	\$18.70	\$93.50	
	RR	Remove existing water closet	1	ea	\$69.30	\$69.30	
	RR	Water closet, floor mounted, tankless, 1.28 gpf, inclu. flush valve and seat	1	ea	\$2,750.00	\$2,750.00	
	RR	Relocate Toilet Tissue Dispenser	2	ea	\$12.50	\$25.00	
	RR	Relocate Paper Towel Dispenser	5	ea	\$94.90	\$474.50	
	RR	Relocate Mirror	5	ea	\$24.80	\$124.00	
	RR	Relocate Hygiene Receptical	1	ea	\$57.50	\$57.50	
	RR	Remove existing lavatory	4	ea	\$55.30	\$221.20	
	RR	Lavatory 20" x 18" single bowl	4	ea	\$2,250.00	\$9,000.00	
	RR	Pipe Insulation, under lavatory	4	ea	\$44.40	\$177.60	
	Additional	Department of Building, Planning and Development Counter	4	lf	\$174.80	\$699.20	
	Additional	City Treasurer's Counter	4	lf	\$174.80	\$699.20	
	Additional	Mayor's Office Counter	4	lf	\$174.80	\$699.20	
	Additional	Police Station Counter	4	ea	\$174.80	\$699.20	
	Additional	Building Directory	3	ea	\$717.30	\$2,151.90	
	Additional	Accessible Signage at Goods and Services	4	ea	\$126.70	\$506.80	
	Additional	Demolish door hardware in Mayor's Office	1	ea	\$37.50	\$37.50	
	Additional	Provide Lever-Type Office Security Hardware in Mayor's Office	1	ea	\$187.50	\$187.50	
Total:						\$24,041.90	

	Location	Description	Quantity	Unit	Units Price	Total Estimated Cost	Completed Date
Fire Station 1	Site	Parking lot ADA 12x18 sign on 8' galvanized post	2	ea	\$126.70	\$253.40	
	Site	Pavement parking lines, parking stall, 4 inch wide	1	ea	\$1,250.00	\$1,250.00	
	Approach	Sidewalk Replacement	3	sy	\$68.80	\$206.40	
	Approach	Door Threshold	1	ea	\$187.50	\$187.50	
	Approach	Adjust Door Closer	5	ea	\$47.90	\$239.50	
	RR	Tactile ADA Signage, restroom	2	ea	\$40.70	\$81.40	
	RR	Relocate Grab Bar, 1-1/2" diameter x 36" long	1	ea	\$18.70	\$18.70	
	RR	Relocate Grab Bar, 1-1/2" diameter x 42" long	1	ea	\$77.70	\$77.70	
	RR	Grab Bar, Satin Finish, 1-1/2" diameter x 18" long	3	ea	\$66.50	\$199.50	
	RR	Grab Bar, Satin Finish, 1-1/2" diameter x 18" long at transfer shower	2	ea	\$66.50	\$133.00	
	RR	Remove existing water closet	2	ea	\$69.30	\$138.60	
	RR	Water closet, floor mounted, tankless, 1.28 gpf, inclu. flush valve and seat	2	ea	\$2,750.00	\$5,500.00	
	RR	Relocate Urinal Partition	1	ea	\$12.50	\$12.50	
	RR	Toilet Tissue Dispenser	1	ea	\$12.50	\$12.50	
	RR	Hand Dryer	1	ea	\$746.70	\$746.70	
	RR	Relocate Mirror	3	ea	\$24.80	\$74.40	
Total:						\$9,131.80	

	Location	Description	Quantity	Unit	Units Price	Total Estimated Cost	Completed Date
<b>Fire Station 2</b>	Site	Pavement parking lines, parking stall, 4 inch wide	1	ea	\$1,250.00	<b>\$1,250.00</b>	
	Site	Adjust parking lot signage	1	ea	\$15.70	<b>\$15.70</b>	
	Approach	Replace sidewalk/Ramp	1	sy	\$68.80	<b>\$68.80</b>	
	Approach	Lower Bell	1	ea	\$97.50	<b>\$97.50</b>	
	Approach	Door Threshold	1	ea	\$187.50	<b>\$187.50</b>	
	Approach	Adjust Door Closer	1	ea	\$47.90	<b>\$47.90</b>	
	RR	Tactile ADA Signage, restroom	2	ea	\$40.70	<b>\$81.40</b>	
	RR	Demolish Existing Toilet Partitions	1	ea	\$625.00	<b>\$625.00</b>	
	RR	Provide Toilet Partition	2	ea	\$2,134.80	<b>\$4,269.60</b>	
	RR	Grab Bar, Satin Finish, 1-1/2" x 36" long	2	ea	\$58.00	<b>\$116.00</b>	
	RR	Grab Bar, Satin Finish, 1-1/2" x 42" long	2	ea	\$77.70	<b>\$155.40</b>	
	RR	Grab Bar, Satin Finish, 1-1/2" diameter x 18" long	2	ea	\$66.50	<b>\$133.00</b>	
	RR	Remove existing water closet	1	ea	\$69.30	<b>\$69.30</b>	
	RR	Water closet, floor mounted, tankless, 1.28 gpf, inclu. flush valve and seat	1	ea	\$2,750.00	<b>\$2,750.00</b>	
	RR	Relocate Urinal	1	ea	\$2,000.00	<b>\$2,000.00</b>	
	RR	Hand Dryer		ea	\$746.70	<b>\$0.00</b>	
	RR	Relocate Mirror	2	ea	\$24.80	<b>\$49.60</b>	
	RR	Relocate Soap Dispenser		ea	\$18.70	<b>\$0.00</b>	
	RR	Remove existing lavatory	3	ea	\$55.30	<b>\$165.90</b>	
	RR	Lavatory 20" x 18" single bowl	3	ea	\$2,250.00	<b>\$6,750.00</b>	
	RR	Pipe Insulation, under lavatory	3	ea	\$44.40	<b>\$133.20</b>	
	RR	Reconfigure restroom to allow door to open 90 degrees	1	ls	\$1,250.00	<b>\$1,250.00</b>	
	Additional	Remove existing drinking fountain	1	ea	\$92.40	<b>\$92.40</b>	
	Additional	Drinking fountain, wall mounted, non recessed, stainless steel, dual level and single bubbler	1	ea	\$3,279.80	<b>\$3,279.80</b>	
	Additional	Add section of compliant height countertop	4	lf	\$174.80	<b>\$699.20</b>	
	Additional	ADA tactile room signage	8	ea	\$40.70	<b>\$325.60</b>	
<b>Total:</b>						<b>\$24,612.80</b>	

	Location	Description	Quantity	Unit	Units Price	Total Estimated Cost	Completed Date
<b>Water Dept.</b>	Site	Parking lot ADA 12x18 sign on 8" galvanized post	1	ea	\$126.70	<b>\$126.70</b>	
	Site	Pavement parking lines, parking stall, 4 inch wide	1	ea	\$1,250.00	<b>\$1,250.00</b>	
	Approach	Adjust Door Closer	1	ea	\$47.90	<b>\$47.90</b>	
	RR	Tactile ADA Signage, restroom	2	ea	\$40.70	<b>\$81.40</b>	
	RR	Adjust Door Closer	3	ea	\$47.90	<b>\$143.70</b>	
	RR	Demolish Existing Toilet Partitions	2	ea	\$625.00	<b>\$1,250.00</b>	
	RR	Provide Toilet Partition	2	ea	\$2,134.80	<b>\$4,269.60</b>	
	RR	Grab Bar, Satin Finish, 1-1/2" x 36" long	2	ea	\$58.00	<b>\$116.00</b>	
	RR	Grab Bar, Satin Finish, 1-1/2" x 42" long	2	ea	\$77.70	<b>\$155.40</b>	
	RR	Grab Bar, Satin Finish, 1-1/2" diameter x 18" long	2	ea	\$66.50	<b>\$133.00</b>	
	RR	Remove existing water closet	2	ea	\$69.30	<b>\$138.60</b>	
	RR	Water closet, floor mounted, tankless, 1.28 gpf, inclu. flush valve and seat	2	ea	\$2,750.00	<b>\$5,500.00</b>	
	RR	Relocate Urinal	1	ea	\$2,000.00	<b>\$2,000.00</b>	
	RR	Toilet Tissue Dispenser	2	ea	\$12.50	<b>\$25.00</b>	
	RR	Relocate Mirror	3	ea	\$24.80	<b>\$74.40</b>	
	RR	Relocate Soap Dispenser	1	ea	\$18.70	<b>\$18.70</b>	
	RR	Remove existing lavatory	3	ea	\$55.30	<b>\$165.90</b>	
	RR	Lavatory 20" x 18" single bowl	3	ea	\$2,250.00	<b>\$6,750.00</b>	
	RR	Pipe Insulation, under lavatory	3	ea	\$44.40	<b>\$133.20</b>	
	Additional	Lower shelving/closet rod	2	ea	\$37.50	<b>\$75.00</b>	
	Additional	Drinking fountain, wall mounted, non recessed, stainless steel, dual level and single bubbler	1	ea	\$3,279.80	<b>\$3,279.80</b>	
<b>Total:</b>						<b>\$25,734.30</b>	

	Location	Description	Quantity	Unit	Units Price	Total Estimated Cost	Completed Date
<b>Street Dept.</b>	Site	Parking lot ADA 12x18 sign on 8" galvanized post	1	ea	\$126.70	<b>\$126.70</b>	2025
	Site	Pavement parking lines, parking stall, 4 inch wide	1	ea	\$1,250.00	<b>\$1,250.00</b>	2025
	Approach	Demolish and Provide Curb Ramp	6	sy	\$68.80	<b>\$412.80</b>	
	Approach	Demolish and Provide Stoop	3	sy	\$68.80	<b>\$206.40</b>	
	Approach	Adjust Door Closer	1	ea	\$47.90	<b>\$47.90</b>	
	RR	Tactile ADA Signage, restroom	1	ea	\$40.70	<b>\$40.70</b>	
	RR	Remove wood door and frame	1	ea	\$13.50	<b>\$13.50</b>	
	RR	New Wood Frame and Door	1	ea	\$36.90	<b>\$36.90</b>	
	RR	Grab Bar, Satin Finish, 1-1/2" x 36" long	1	ea	\$58.00	<b>\$58.00</b>	
	RR	Grab Bar, Satin Finish, 1-1/2" x 42" long	1	ea	\$77.70	<b>\$77.70</b>	
	RR	Grab Bar, Satin Finish, 1-1/2" diameter x 18" long	1	ea	\$66.50	<b>\$66.50</b>	
	RR	Remove existing water closet	1	ea	\$69.30	<b>\$69.30</b>	
	RR	Water closet, floor mounted, tankless, 1.28 gpf, inclu. flush valve and seat	1	ea	\$2,750.00	<b>\$2,750.00</b>	
	RR	Toilet Tissue Dispenser	1	ea	\$12.50	<b>\$12.50</b>	
	RR	Relocate Paper Towel Dispenser	1	ea	\$94.90	<b>\$94.90</b>	
	RR	Soap Dispenser	1	ea	\$105.70	<b>\$105.70</b>	
	RR	Relocate Mirror	1	ea	\$24.80	<b>\$24.80</b>	
	RR	Remove existing lavatory	1	ea	\$55.30	<b>\$55.30</b>	
	RR	Lavatory 20" x 18" single bowl	1	ea	\$2,250.00	<b>\$2,250.00</b>	
	RR	Pipe Insulation, under lavatory	1	ea	\$44.40	<b>\$44.40</b>	
	Additional	Drinking fountain, wall mounted, non recessed, stainless steel, dual level and single bubbler	1	ea	\$3,279.80	<b>\$3,279.80</b>	2025
<b>Total:</b>						<b>\$11,023.80</b>	

	Location	Description	Quantity	Unit	Units Price	Total Estimated Cost	Completed Date
<b>Electric Dept.</b>	Site	Parking lot ADA 12x18 sign on 8' galvanized post	1	ea	\$126.70	<b>\$126.70</b>	2025
	Site	Pavement parking lines, parking stall, 4 inch wide	1	ea	\$1,250.00	<b>\$1,250.00</b>	
	Approach	5' wide concrete path	8.5	68.8	\$68.80	<b>\$584.80</b>	2025
	Approach	Adjust Door Closer	2	ea	\$47.90	<b>\$95.80</b>	
<b>Total:</b>						<b>\$2,057.30</b>	

	Location	Description	Quantity	Unit	Units Price	Total Estimated Cost	Completed Date
<b>WPC Dept.</b>	Site	Parking lot ADA 12x18 sign on 8' galvanized post	1	ea	\$126.70	<b>\$126.70</b>	
	Site	Concrete Repair/Patch	1	sy	\$68.80	<b>\$68.80</b>	
	Site	New door Threshold	1	ea	\$187.50	<b>\$187.50</b>	
	Approach	Adjust Door Closer	2	ea	\$47.90	<b>\$95.80</b>	
	RR	Tactile ADA Signage, restroom	2	ea	\$40.70	<b>\$81.40</b>	
	RR	Adjust Door Closer	2	ea	\$47.90	<b>\$95.80</b>	
	RR	Lever-Type Door Hardware	2	ea	\$205.50	<b>\$411.00</b>	
	RR	Remove existing water closet	1	ea	\$69.30	<b>\$69.30</b>	
	RR	Water closet, floor mounted, tankless, 1.28 gpf, inclu. flush valve and seat	1	ea	\$2,750.00	<b>\$2,750.00</b>	
	RR	Relocate Mirror	2	ea	\$24.80	<b>\$49.60</b>	
	RR	Relocate Paper Towel Dispenser	2	ea	\$94.90	<b>\$189.80</b>	
	RR	Soap Dispenser	2	ea	\$105.70	<b>\$211.40</b>	
	RR	Pipe Insulation, under lavatory	2	ea	\$44.40	<b>\$88.80</b>	
	Additional	Add section of compliant height countertop	4	lf	\$174.80	<b>\$699.20</b>	
	Additional	Relocate and Recess First Aid Equipment	1	ea	\$37.50	<b>\$37.50</b>	
	Additional	Drinking fountain, wall mounted, non recessed, stainless steel, dual level and single bubbler	1	ea	\$3,279.80	<b>\$3,279.80</b>	
	Additional	Remove Portion of Lockers	1	ls	\$125.00	<b>\$125.00</b>	
<b>Total:</b>						<b>\$8,567.40</b>	

	Location	Description	Quantity	Unit	Units Price	Total Estimated Cost	Completed Date
<b>Parks Dept. Office</b>	Site	Parking lot ADA 12x18 sign on 8' galvanized post	1	ea	\$126.70	<b>\$126.70</b>	
	Approach	Adjust Door Closer	1	ea	\$47.90	<b>\$47.90</b>	3/28/2023
	RR	Tactile ADA Signage, restroom	1	ea	\$40.70	<b>\$40.70</b>	
	RR	Grab Bar, Satin Finish, 1-1/2" x 36" long	1	ea	\$58.00	<b>\$58.00</b>	
	RR	Grab Bar, Satin Finish, 1-1/2" x 42" long	1	ea	\$77.70	<b>\$77.70</b>	
	RR	Grab Bar, Satin Finish, 1-1/2" diameter x 18" long	1	ea	\$66.50	<b>\$66.50</b>	
	RR	Remove existing water closet	1	ea	\$69.30	<b>\$69.30</b>	
	RR	Water closet, floor mounted, tankless, 1.28 gpf, inclu. flush valve and seat	1	ea	\$2,750.00	<b>\$2,750.00</b>	
	RR	Remove existing lavatory	1	ea	\$55.30	<b>\$55.30</b>	
	RR	Lavatory 20" x 18" single bowl	1	ea	\$2,250.00	<b>\$2,250.00</b>	
	RR	Pipe Insulation, under lavatory	1	ea	\$44.40	<b>\$44.40</b>	
	Additional	Drinking fountain, wall mounted, non recessed, stainless steel, dual level and single bubbler	1	ea	\$3,279.80	<b>\$3,279.80</b>	
<b>Total:</b>						<b>\$8,866.30</b>	

	Location	Description	Quantity	Unit	Units Price	Total Estimated Cost	Completed Date
<b>Rieke Park Restrooms</b>	Approach	Relocate ADA Signage, restroom	6	ea	\$11.80	<b>\$70.80</b>	
	Approach	Adjust Door Closer	6	ea	\$47.90	<b>\$287.40</b>	3/22/2023
	RR	Grab Bar, Satin Finish, 1-1/2" diameter x 18" long	4	ea	\$66.50	<b>\$266.00</b>	3/16/2023
	RR	Relocate Grab Bar, 1-1/2" x 36" long	6	ea	\$18.70	<b>\$112.20</b>	3/15/2023
	RR	Relocate Grab Bar, 1-1/2" x 42" long	6	ea	\$18.70	<b>\$112.20</b>	3/15/2023
	RR	Relocate Lavatory	4	ea	\$34.00	<b>\$136.00</b>	3/16/2023
	RR	Relocate Stall Latch	4	ea	\$30.00	<b>\$120.00</b>	3/20/2023
	RR	Hand Dryer	2	ea	\$746.70	<b>\$1,493.40</b>	
	RR	Relocate Mirror	1	ea	\$24.80	<b>\$24.80</b>	3/16/2023
	RR	Relocate Soap Dispenser	6	ea	\$18.70	<b>\$112.20</b>	3/15/2023
	RR	Pipe Insulation, under lavatory	2	ea	\$44.40	<b>\$88.80</b>	
	Additional	Remove existing drinking fountain	1	ea	\$92.40	<b>\$92.40</b>	
	Additional	Drinking fountain, wall mounted, non recessed, stainless steel, dual level and single bubbler	1	ea	\$3,279.80	<b>\$3,279.80</b>	
	Additional	Modifications to include additional concession window	10	lf	\$174.80	<b>\$1,748.00</b>	
	Additional	Accessible Route to Bleachers	100	sy	\$62.50	<b>\$6,250.00</b>	
<b>Total:</b>						<b>\$14,194.00</b>	



	Location	Description	Quantity	Unit	Units Price	Total Estimated Cost	Completed Date
<b>Rieke Park Lodge</b>	Site	Parking lot ADA 12x18 sign on 8' galvanized post	1	ea	\$126.70	<b>\$126.70</b>	
	Site	Pavement parking lines, parking stall, 4 inch wide	1	ea	\$1,250.00	<b>\$1,250.00</b>	
	Approach	Relocate ADA Signage, restroom	2	ea	\$11.80	<b>\$23.60</b>	
	Approach	Adjust Door Closer	5	ea	\$47.90	<b>\$239.50</b>	3/21/2023
	RR	Grab Bar, Satin Finish, 1-1/2" diameter x 18" long	2	ea	\$66.50	<b>\$133.00</b>	3/14/2023
	RR	Remove existing water closet	1	ea	\$69.30	<b>\$69.30</b>	
	RR	Water closet, floor mounted, tankless, 1.28 gpf, inclu. flush valve and seat	1	ea	\$2,750.00	<b>\$2,750.00</b>	
	RR	Relocate Urinal	1	ea	\$2,000.00	<b>\$2,000.00</b>	
	RR	Relocate Paper Towel Dispenser	2	ea	\$94.90	<b>\$189.80</b>	3/14/2023
	Additional	Drinking fountain, wall mounted, non recessed, stainless steel, dual level and single bubbler	1	ea	\$3,279.80	<b>\$3,279.80</b>	
<b>Total:</b>						<b>\$10,061.70</b>	

	Location	Description	Quantity	Unit	Units Price	Total Estimated Cost	Completed Date
<b>Eckhart Park Restrooms</b>	Approach	Tactile ADA Signage, restroom	2	ea	\$40.70	<b>\$81.40</b>	
	Approach	Adjust Door Closer	2	ea	\$47.90	<b>\$95.80</b>	3/21/2023
	RR	Demolish Concrete Block Partition	40	sf	\$2.50	<b>\$100.00</b>	
	RR	Provide Toilet Partitions	2	ea	\$2,134.80	<b>\$4,269.60</b>	
	RR	Grab Bar, Satin Finish, 1-1/2" x 36" long	2	ea	\$58.00	<b>\$116.00</b>	
	RR	Grab Bar, Satin Finish, 1-1/2" x 42" long	2	ea	\$77.70	<b>\$155.40</b>	
	RR	Grab Bar, Satin Finish, 1-1/2" diameter x 18" long	2	ea	\$66.50	<b>\$133.00</b>	
	RR	Remove existing water closet	2	ea	\$69.30	<b>\$138.60</b>	
	RR	Water closet, floor mounted, tankless, 1.28 gpf, inclu. flush valve and seat	2	ea	\$1,152.40	<b>\$2,304.80</b>	
	RR	Toilet Tissue Dispenser	2	ea	\$12.50	<b>\$25.00</b>	
	RR	Hand Dryer	2	ea	\$746.70	<b>\$1,493.40</b>	
	RR	Relocate Soap Dispenser	2	ea	\$18.70	<b>\$37.40</b>	3/16/2023
	RR	Pipe Insulation, under lavatory	2	ea	\$44.40	<b>\$88.80</b>	
	Additional	Remove existing drinking fountain	1	ea	\$92.40	<b>\$92.40</b>	
	Additional	Drinking fountain, wall mounted, non recessed, stainless steel, dual level and single bubbler	1	ea	\$3,279.80	<b>\$3,279.80</b>	
<b>Total:</b>						<b>\$12,411.40</b>	

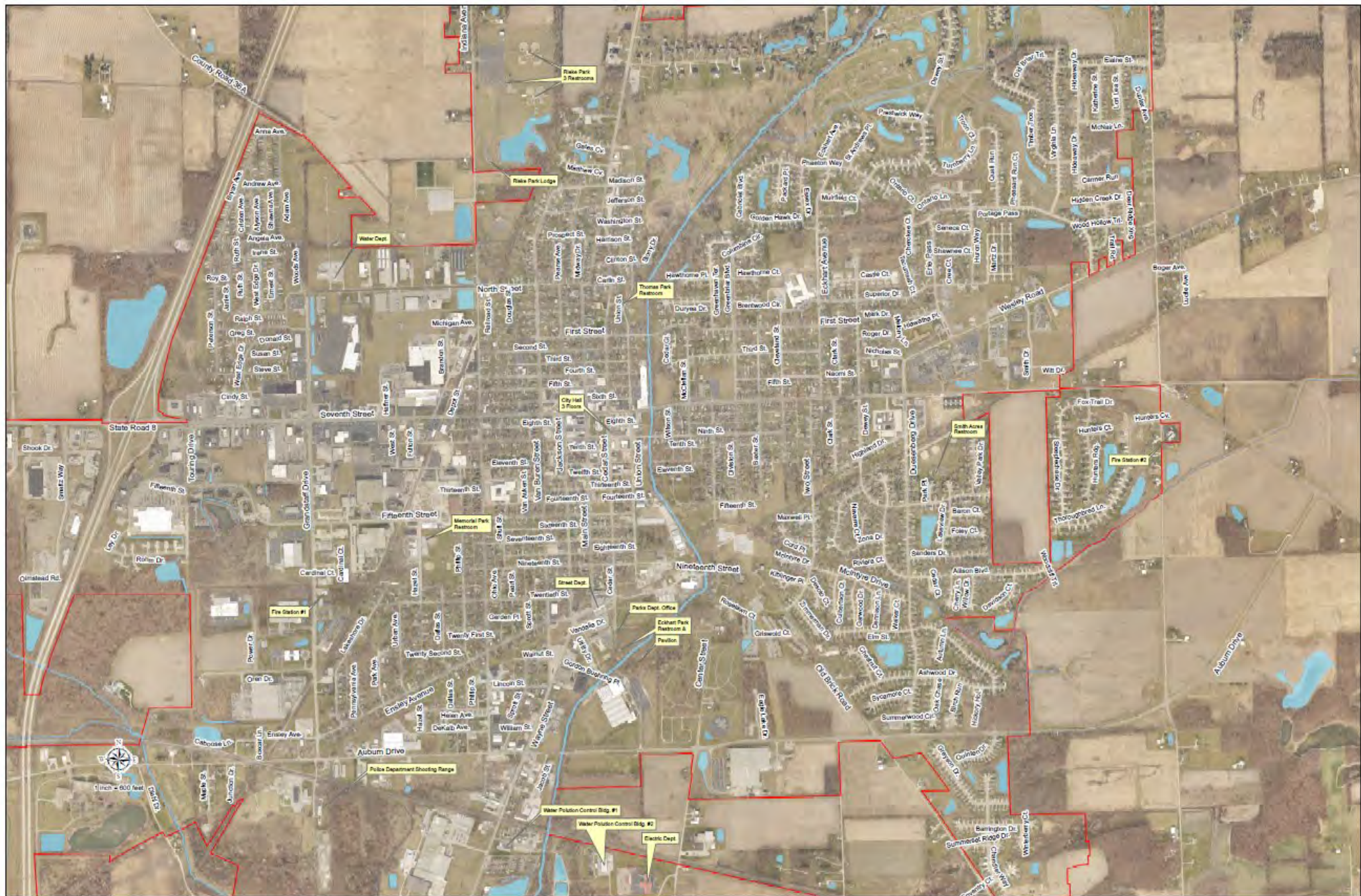
	Location	Description	Quantity	Unit	Units Price	Total Estimated Cost	Completed Date
<b>Eckhart Park Pavilion</b>	Approach	Demolish ramp	1	ls	\$625.00	<b>\$625.00</b>	
	Approach	New ADA compliant ramp	1	ls	\$6,250.00	<b>\$6,250.00</b>	
	Approach	Stair handrails	1	ls	\$3,125.00	<b>\$3,125.00</b>	
	Approach	Adjust door closure	1	ea	\$47.80	<b>\$47.80</b>	3/28/2023
	Approach	Remove and Replace Sidewalk	40	sy	\$68.80	<b>\$2,752.00</b>	
<b>Total:</b>						<b>\$12,799.80</b>	

	Location	Description	Quantity	Unit	Units Price	Total Estimated Cost	Completed Date
<b>Smith Acres Park</b>	Site	Parking lot ADA 12x18 sign on 8' galvanized post	1	ea	\$126.70	<b>\$126.70</b>	
	Site	Pavement parking lines, parking stall, 4 inch wide	1	ea	\$1,250.00	<b>\$1,250.00</b>	
	Approach	Tactile ADA Signage, restroom	2	ea	\$40.70	<b>\$81.40</b>	
	Approach	Demolish and Provide New Sidewalk	2	sy	\$68.80	<b>\$137.60</b>	
	Approach	Adjust Door Closer	2	ea	\$47.90	<b>\$95.80</b>	3/21/2023
	Approach	Demolish and Provide New Stoop	44	sy	\$68.80	<b>\$3,027.20</b>	
	RR	Demolish Concrete Block Partitions	40	sf	\$2.50	<b>\$100.00</b>	
	RR	Provide Toilet Partitions	2	ea	\$2,134.80	<b>\$4,269.60</b>	
	RR	Grab Bar, Satin Finish, 1-1/2" x 36" long	2	ea	\$58.00	<b>\$116.00</b>	
	RR	Grab Bar, Satin Finish, 1-1/2" x 42" long	2	ea	\$77.70	<b>\$155.40</b>	
	RR	Grab Bar, Satin Finish, 1-1/2" diameter x 18" long	2	ea	\$66.50	<b>\$133.00</b>	
	RR	Remove existing water closet	2	ea	\$69.30	<b>\$138.60</b>	
	RR	Water closet, floor mounted, tankless, 1.28 gpf, inclu. flush valve and seat	2	ea	\$2,750.00	<b>\$5,500.00</b>	
	RR	Toilet Tissue Dispenser	2	ea	\$12.50	<b>\$25.00</b>	
	RR	Hand Dryer	2	ea	\$746.70	<b>\$1,493.40</b>	
	RR	Relocate Soap Dispenser	1	ea	\$18.70	<b>\$18.70</b>	3/14/2023
	RR	Pipe Insulation, under lavatory	2	ea	\$44.40	<b>\$88.80</b>	
	Additional	Remove existing drinking fountain	1	ea	\$92.40	<b>\$92.40</b>	
	Additional	Drinking fountain, wall mounted, non recessed, stainless steel, dual level and single bubbler	1	ea	\$3,279.80	<b>\$3,279.80</b>	
<b>Total:</b>						<b>\$20,129.40</b>	

	Location	Description	Quantity	Unit	Units Price	Total Estimated Cost	Completed Date
Thomas Park	Approach	Tactile ADA Signage, restroom	2	ea	\$40.70	\$81.40	
	Approach	Adjust Door Closer	2	ea	\$48.90	\$97.80	3/21/2023
	Approach	New Door Hardware	1	ea	\$625.00	\$625.00	
	RR	Demolish Concrete Block Partitions	40	sf	\$2.50	\$100.00	
	RR	Provide Toilet Partitions	2	ea	\$2,134.80	\$4,269.60	
	RR	Grab Bar, Satin Finish, 1-1/2" x 36" long	2	ea	\$58.00	\$116.00	
	RR	Grab Bar, Satin Finish, 1-1/2" x 42" long	2	ea	\$77.70	\$155.40	
	RR	Grab Bar, Satin Finish, 1-1/2" diameter x 18" long	2	ea	\$66.50	\$133.00	
	RR	Remove existing water closet	2	ea	\$69.30	\$138.60	
	RR	Water closet, floor mounted, tankless, 1.28 gpf, inclu. flush valve and seat	2	ea	\$1,152.40	\$2,304.80	
	RR	Relocate Urinal	1	ea	\$2,000.00	\$2,000.00	3/15/2023
	RR	Toilet Tissue Dispenser	2	ea	\$12.50	\$25.00	
	RR	Hand Dryer	2	ea	\$746.70	\$1,493.40	
	RR	Relocate Soap Dispenser	1	ea	\$18.70	\$18.70	3/15/2023
	RR	Pipe Insulation, under lavatory	2	ea	\$44.40	\$88.80	
	Additional	Remove existing drinking fountain	1	ea	\$92.40	\$92.40	
	Additional	Drinking fountain, wall mounted, non recessed, stainless steel, dual level and single bubbler	1	ea	\$3,279.80	\$3,279.80	
Total:						\$15,019.70	

	Location	Description	Quantity	Unit	Units Price	Total Estimated Cost	Completed Date
Memorial Park	Site	Parking lot ADA 12x18 sign on 8' galvanized post	3	ea	\$126.70	\$380.10	2025
	Site	Pavement parking lines, parking stall, 4 inch wide	1	ea	\$1,250.00	\$1,250.00	2025
	Site	Concrete sidewalk, 4" thickness, 5' wide	140	sy	\$68.80	\$9,632.00	2025
	Approach	Tactile ADA Signage, restroom	2	ea	\$40.70	\$81.40	2025
	Approach	Demolish and Provide Stoop	10	sy	\$68.80	\$688.00	2025
	Approach	Adjust Door Closer	1	ea	\$47.90	\$47.90	3/21/2023
	RR	Demolish Concrete Block Partitions	40	sf	\$0.90	\$36.00	2025
	RR	Provide Toilet Partitions	2	ea	\$2,134.80	\$4,269.60	2025
	RR	Grab Bar, Satin Finish, 1-1/2" x 36" long	2	ea	\$58.00	\$116.00	2025
	RR	Grab Bar, Satin Finish, 1-1/2" x 42" long	2	ea	\$77.70	\$155.40	2025
	RR	Grab Bar, Satin Finish, 1-1/2" diameter x 18" long	2	ea	\$66.50	\$133.00	2025
	RR	Remove existing water closet	2	ea	\$69.30	\$138.60	2025
	RR	Water closet, floor mounted, tankless, 1.28 gpf, inclu. flush valve and seat	2	ea	\$1,152.40	\$2,304.80	2025
	RR	Relocate Urinal	1	ea	\$2,000.00	\$2,000.00	3/21/2023
	RR	Toilet Tissue Dispenser	2	ea	\$12.50	\$25.00	2025
	RR	Hand Dryer	2	ea	\$746.70	\$1,493.40	2025
	RR	Relocate Soap Dispenser	1	ea	\$18.70	\$18.70	2025
	RR	Relocate Lavatory	2	ea	\$34.00	\$68.00	3/21/2023
	RR	Pipe Insulation, under lavatory	2	ea	\$44.40	\$88.80	3/21/2023
	Additional	Remove existing drinking fountain	1	ea	\$92.40	\$92.40	2025
	Additional	Drinking fountain, wall mounted, non recessed, stainless steel, dual level and single bubbler	1	ea	\$3,279.80	\$3,279.80	2025
Total:						\$26,298.90	

	Location	Description	Quantity	Unit	Units Price	Total Estimated Cost	Completed Date
Police Shooting Range	Site	Parking lot ADA 12x18 sign on 8' galvanized post	2	ea	\$126.70	\$253.40	
	Approach	New Threshold	1	ea	\$187.50	\$187.50	
	Approach	Adjust Door Closer	4	ea	\$47.90	\$191.60	
	RR	Tactile ADA Signage, restroom	2	ea	\$40.70	\$81.40	
	RR	Grab Bar, Satin Finish, 1-1/2" diameter x 18" long	2	ea	\$66.50	\$133.00	
	RR	Relocate Hygiene Receptical	1	ea	\$57.50	\$57.50	
	RR	Relocate Paper Towel Dispenser	2	ea	\$94.90	\$189.80	
	RR	Soap Dispenser	2	ea	\$105.70	\$211.40	
	Additional	Stage Access	1	ls	\$7,500.00	\$7,500.00	
	Additional	Accessible Kitchen Sink	1	ea	\$4,750.00	\$4,750.00	
	Additional	Accessible Kitchen Work Surface	1	ea	\$1,000.00	\$1,000.00	
	Additional	Accessible Emergency exit Thresholds	2	ea	\$250.00	\$500.00	
Total:						\$15,055.60	





## *Appendix E: Revisions/Amendments*

### Amendment No. 1(September 2013)

Minor Revisions were made throughout the document. The primary addition was the inclusion of the complete Public Buildings and Facilities Evaluation as part of Section 7 and Appendix D.

### Amendment No. 2 (November 2021)

Minor Revisions were made throughout the document, to correct typos, spacing, and grammar, and to update Inventory Maps for Public Right-of-Way and transition plan.

### Amendment No. 3 (December 2022)

Update Appendix C and Appendix D.

### Amendment No. 4 (December 2023)

Update Appendix C and Appendix D for work completed in 2023.

### Amendment No. 5 (December 2024)

Update Appendix C and Appendix D for work completed in 2024, and update future plan.

### Amendment No. 6 (June 2025)

Update ADA Coordinator and Grievance Form.

### Amendment No. 7 (October 2025)

Update Appendix C and Appendix D for work completed in 2025, and update future plan.