



SYMBIONT
ENGINEERS • SCIENTISTS • CONSTRUCTORS



Combined Sewer Overflow Public Notification Plan City of Auburn, Indiana NPDES No. IN0020672

August 2018

Prepared by:

Symbiont
6737 W. Washington Street
Suite 3440
Milwaukee, WI 53214

TABLE OF CONTENTS

Section	Page
1.0 PURPOSE OF THE CSO PUBLIC NOTIFICATION PLAN	1
2.0 CSO OUTFALL LOCATIONS	1
3.0 SIGNAGE AT CSO OUTFALLS	3
4.0 IDENTIFICATION OF THE HEALTH DEPARTMENT AND OTHER AFFECTED PUBLIC ENTITIES	4
5.0 PROTOCOL FOR CSO DISCHARGE EVENT NOTIFICATION	4
6.0 ANNUAL NOTIFICATION	5
7.0 FEEDBACK FROM THE HEALTH DEPARTMENT	6

Figures

- Figure 1 City of Auburn Permitted Outfall Locations
- Figure 2 Signage at Outfalls 007, 009, and 010
- Figure 3 Signage at Outfall 011

1.0 PURPOSE OF THE CSO PUBLIC NOTIFICATION PLAN

This Combined Sewer Overflow (CSO) Public Notification Plan was developed in compliance with the United States Environmental Protection Agency (U.S. EPA) Great Lakes Basin CSO Public Notification Rule 40 CFR 122.38. This rule became effective on February 7, 2018 and applies to all CSO permittees authorized to discharge directly in to the Great Lakes Basin, which includes the City of Auburn, Indiana (City). Per this rule, the City is required to:

- Prepare a Public Notification Plan by August 7, 2018
- Provide signage at all CSO discharge points by November 7, 2018
- Notify the public, Health Department, and other affected public entities of CSO discharges beginning November 7, 2018
- Provide annual CSO notifications by May 1st of each year, beginning February 7, 2019

This CSO Public Notification Plan satisfies the first requirement listed above, describes how the second requirement is already fulfilled, and defines the City's plan to complete the last two requirements. This CSO Public Notification Plan includes the following sections:

- CSO Outfall Locations
- Signage at CSO Outfalls
- Identification of the Health Department and Other Affected Public Entities
- Protocol for CSO Discharge Event Notification
- Annual Notification
- Feedback from the Health Department

2.0 CSO OUTFALL LOCATIONS

The City of Auburn has four CSO outfalls authorized to discharge under its National Pollutant Discharge Elimination System (NPDES) permit. The locations of the outfalls are shown in Figure 1 and described below.

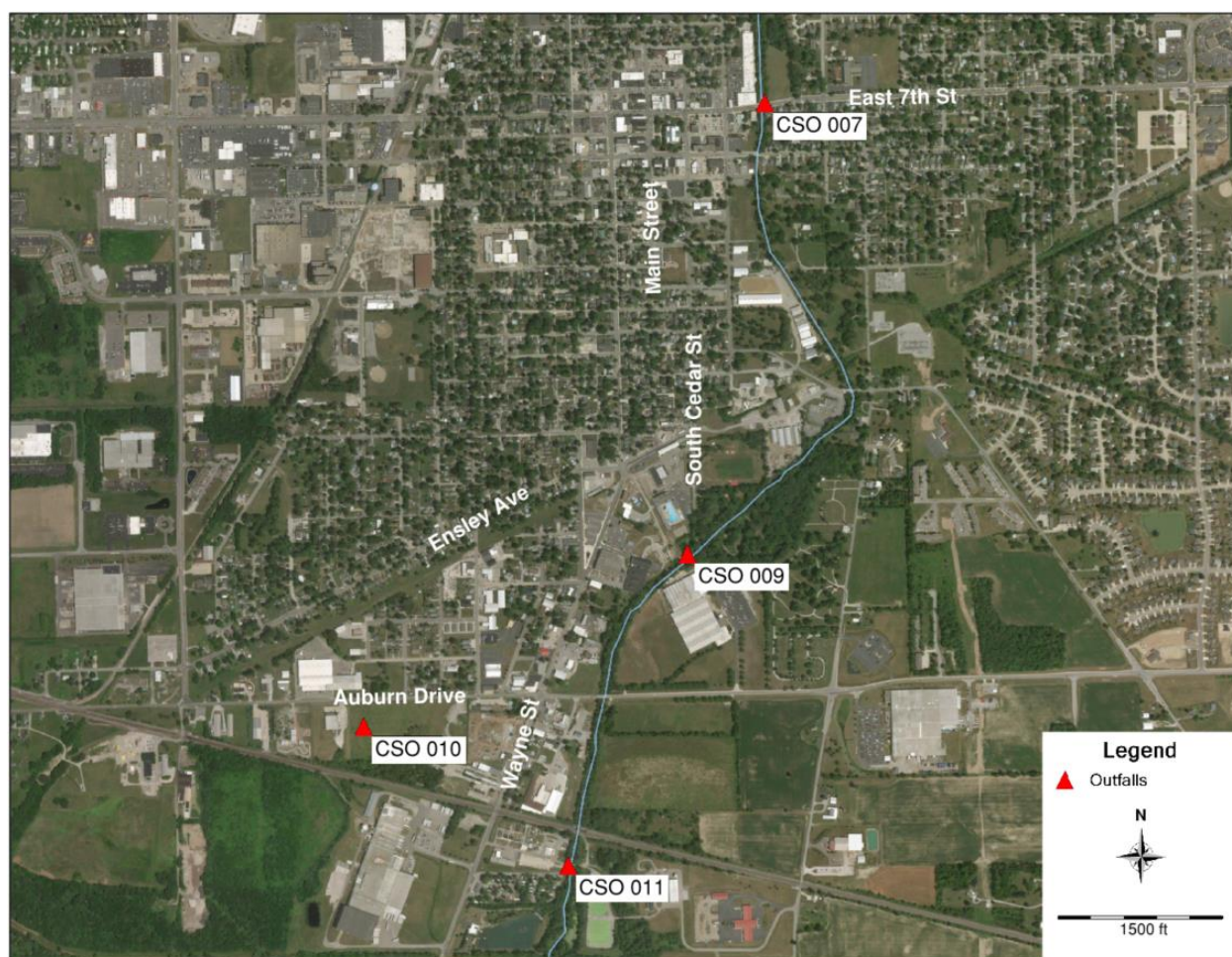
Outfall 007 is located near East 7th Street and Wilson Street and discharges into Cedar Creek via a 30-inch sewer. The outfall is equipped with a flap gate to prevent creek flow from backing up into the collection system.

Outfall 009 is located southeast of Eckhart Park between South Cedar Street and Utility Drive. Outfall 009 discharges to Cedar Creek via parallel 5-foot by 4-foot box culverts. The outfall is equipped with flap gates to prevent creek flow from backing up into the collection system.

Outfall 010 is located south of Auburn Drive and west of Dallas Street. Outfall 010 discharges via a 24-inch sewer south of Auburn Drive to the Isaac Haque Ditch, which discharges into the John Diehl Ditch south of the railroad. The John Diehl Ditch discharges to Cedar Creek.

Outfall 011 is located at the City's Water Pollution Control Facility (WPCF), east of Wayne Street and south of the railroad tracks. The outfall typically conveys partially treated combined sewage to Cedar Creek. Outfall 011 is the discharge point for the City's wet weather treatment system, which consists of a 2.5-million gallon (MG) store-treat tank with screening and disinfection. Flow stored in the tank is returned to the main headworks for full treatment after wet weather events. Flow volumes that exceed the 2.5-MG capacity of the store-treat tank receive the equivalent of primary treatment and disinfection before being discharged to Cedar Creek via a rip-rap lined open channel at Outfall 011. The wet weather treatment system is sized to treat at least a 10-year, 1-hour storm. This outfall only acts as a CSO when the capacity of the treatment system is exceeded.

Figure 1.
City of Auburn Permitted Outfall Locations



3.0 SIGNAGE AT CSO OUTFALLS

The City of Auburn has signs at all four CSO outfalls. The signs at Outfalls 007, 009, and 010 have the same content, an example of which is provided in Figure 2. A photo of the sign at Outfall 011 is provided in Figure 3.

Figure 2.
Signage at Outfalls 007, 009, and 010



Figure 3.
Signage at Outfall 011



The City of Auburn will inspect all CSO outfall signs annually, in late spring or early summer, for visibility, legibility, and accuracy of information. Obstructions, such as vegetation obscuring signage, will be removed upon discovery. Damaged, illegible, or inaccurate signs will be promptly replaced with new signs. Any new signs installed in the future will include the following information:

Permittee Name

City of Auburn

Description of Discharge and Notice That Sewage may be Present in the Water

Untreated combined sewage or partially treated combined sewage, as appropriate

Permittee Contact Information

City of Auburn Water Pollution Control
260-925-1714
wpc@ci.auburn.in.us

NPDES Permit Number

No. IN0020672

CSO Discharge Point Number as Identified in Permit

Outfall 007, 009, 010, or 011, as appropriate

4.0 IDENTIFICATION OF THE HEALTH DEPARTMENT AND OTHER AFFECTED PUBLIC ENTITIES

The local public health department for the City of Auburn is the Dekalb County Health Department. The point of contact at the Dekalb County Health Department is listed below.

Ms. Cathy Manuel
Department Director
220 East Seventh Street
Auburn, IN 46706
260-925-2220
cmanuel@co.dekalb.in.us

As far as the City is aware, no other public entities are affected by the City's CSO discharges. There are no known Native American tribes, parks and recreation departments, or municipalities that use the creek in the vicinity of or within miles downstream of the City's CSO outfalls. The City requested that the Dekalb County Health Department provide input regarding this assessment and Ms. Manuel stated, "it appears the best technology available is being utilized to identify potential for impact on public access areas." The complete response from the Dekalb County Health Department is provided in Section 7 of this plan.

No sensitive areas were identified in the City's 2005 CSO Long Term Control Plan (LTCP).

5.0 PROTOCOL FOR CSO DISCHARGE EVENT NOTIFICATION

The City will send initial and supplemental CSO discharge event notifications to the DeKalb County Health Department and the public. Both notifications to the DeKalb County Health Department will be sent via email to the point of contact identified above. Initial notifications to the public will occur through the City of Auburn app (available for download for Apple devices through the App Store and Android devices through the Google Play Store), posts to the City's Facebook page, and on the homepage of the City's website (<http://www.ci.auburn.in.us>). Supplemental notifications to the public will occur through the City's app and the homepage of the City's website.

The timing and content of the initial and supplemental notifications are described below.

Initial Notifications

The City will issue initial notifications to the public and the health department within four hours of becoming aware of a CSO discharge. The notifications will include the following information:

In accordance with the City's CSO Public Notification Plan, available at www.ci.auburn.in.us, we are notifying you that the City of Auburn began discharging combined sewage to Cedar Creek at Outfall(s) <outfall number(s)> on <date> at <time>. The discharge [ended at <time> on <date> OR is ongoing]. For further information contact City representatives at 260-925-1714 or wpc@ci.auburn.in.us.

Supplemental Notifications

The City will issue supplemental notifications within seven days of becoming aware a CSO discharge has ended. The notifications will include the following information:

In accordance with the City's CSO Public Notification Plan, available at www.ci.auburn.in.us, we are notifying you that the City of Auburn CSO on <date> resulted in [<number> gallons of combined sewage AND/OR <number> gallons of partially treated sewage] being discharged to Cedar Creek. The discharge ended at <time> on <date>.

The City maintains ultrasonic level meters in the diversion structures for each outfall. Each level meter is programmed with a set point to indicate when overflows occur. The duration of overflows will be determined by the duration that the level meter data shows that the water elevation in the diversion structure was above the set point. The programming for the level meters also includes a calculation to determine overflow volume based on the depth and duration that the water elevation is above the set point. The City currently uses this information to report CSO discharge duration and volume in its discharge monitoring reports (DMRs). The same approach will be used to report CSO discharge duration and volume in the supplemental notifications provided to the public and Health Department.

6.0 ANNUAL NOTIFICATION

By May 1st of each year, the City of Auburn will issue an annual notification summarizing the CSO discharges that occurred in the previous calendar year. The annual notifications will be posted to the Water Pollution Control page of the City's website. At the time of posting, the City will email its Indiana Department of Environmental Management (IDEM) LTCP CSO Project Manager and the U.S. EPA (NPDES_CSO@epa.gov) a link to the annual notification and the contact information of the person responsible for maintaining the website. The annual notification will include the following information:

- The location, receiving water, and treatment provided at each CSO discharge point
- The date, location, duration, volume, and cause of each wet weather CSO discharge that occurred
- The date, location, duration, volume, and cause of each dry weather CSO discharge that occurred
- A summary of available monitoring data for CSO discharges
- A description of public access areas potentially impacted by each CSO discharge
- Representative precipitation data in total inches to nearest 0.1 inch that resulted in a CSO discharge
- Permittee contact information, if not listed elsewhere on the website

- A summary of the implementation of the nine minimum controls
- The status of the implementation of the City's CSO LTCP, including a description of the remaining key milestones and the average annual number of CSO discharges that are anticipated after implementation of the LTCP

7.0 FEEDBACK FROM THE HEALTH DEPARTMENT

During the preparation of this CSO Public Notification Plan, the City requested input from the Dekalb County Health Department. A draft of this plan was provided to the point of contact at the Health Department on July 6, 2018 and the following feedback was received from Ms. Manuel on August 2, 2018:

"The Dekalb County Health Department has reviewed Auburn's CSO Notification Plan and it appears the best technology available is being utilized to identify potential for impact on public access areas and to notify this department and the public of CSO events. The Health Department has no objection to the draft plan."